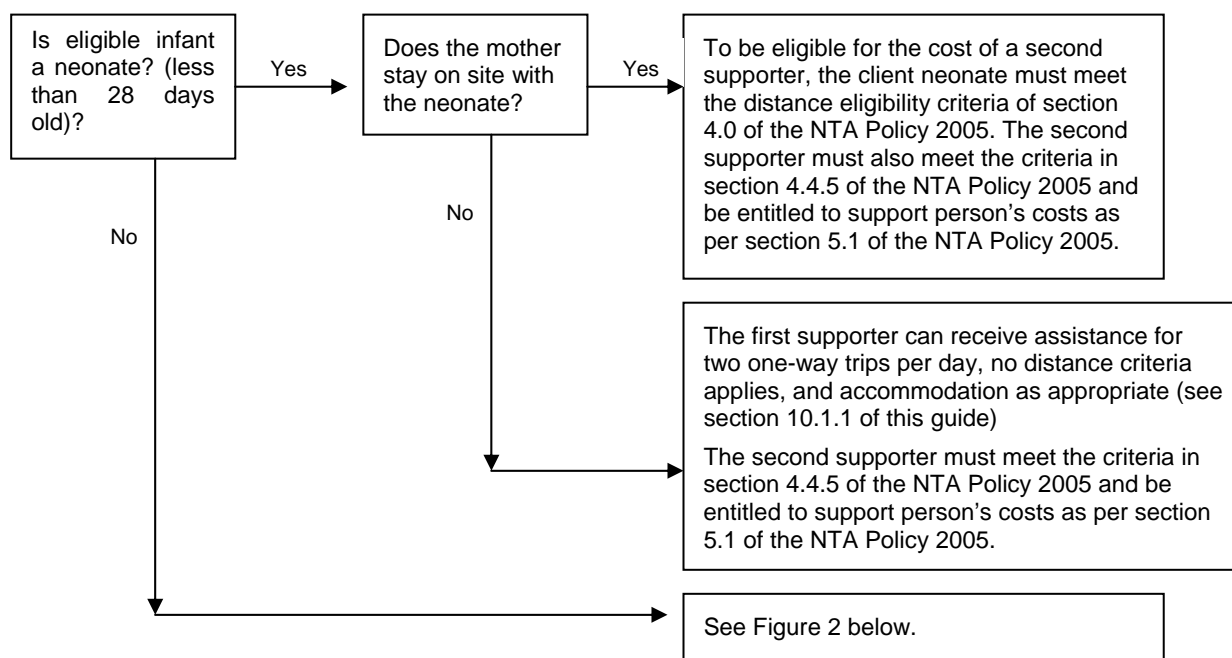


## Appendix 2

### Eligibility of neonate supporters

**Figure 1.** Flow chart for **inpatient** neonate eligibility



Apart from the rules stated above, the usual policy applies. For example, accommodation will not usually be granted when the client or support person of an eligible client travels less than 100 kilometres one way.

**Figure 2.** Flow chart for **outpatient** neonate eligibility

