



WAITOMO TA HEALTH PROFILE 2015

DID YOU KNOW?

2%
of the Waikato DHB population live in Waitomo

2ND
smallest Territorial Authority (TA) in Waikato DHB

8,907
people live in Waitomo

BIRTHS IN 2014



13
births to women 19 years and under

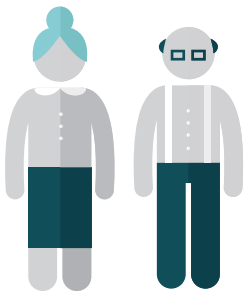


20
births to women 35 years and over



121
Total number of births in 2014

POPULATION (2013 Census)



13%
of the population is 65 years and over



24%
of the population is under 15 years old



8%
of the population is under 5 years of age

TRANSPORT

8%
of households have no access to a motor vehicle



Males live to around **77** years

Females live to around **80** years

19% of households are single parent

13% of the population live in crowded housing

48% (0-14 years) of the population live in the most deprived areas (9 and 10 NZ Dep)

SMOKING

31%
2006
Regular smokers 15 years and over

25%
2013
Regular smokers 15 years and over

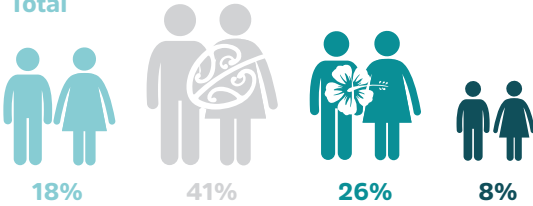


WAITOMO TA

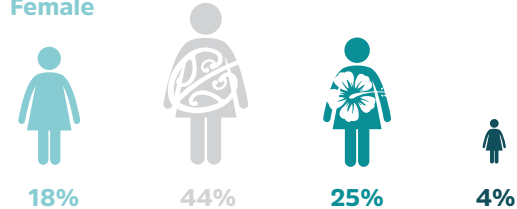
HEALTH PROFILE 2015

Percentage of regular smokers within Waitomo TA by ethnicity. 2013 Census.

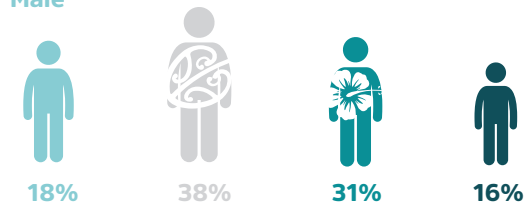
Total



Female



Male

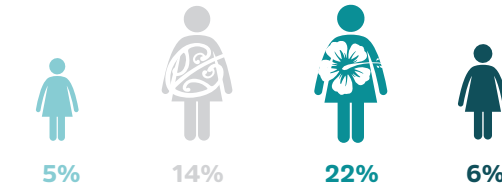


Percentage of unemployed people within Waitomo TA by ethnicity. 2013 Census

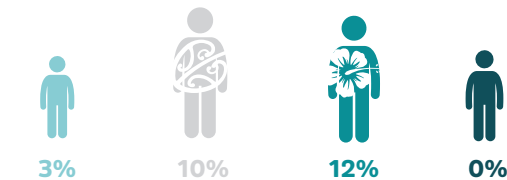
Total



Female



Male



POPULATION KEY



European



Māori



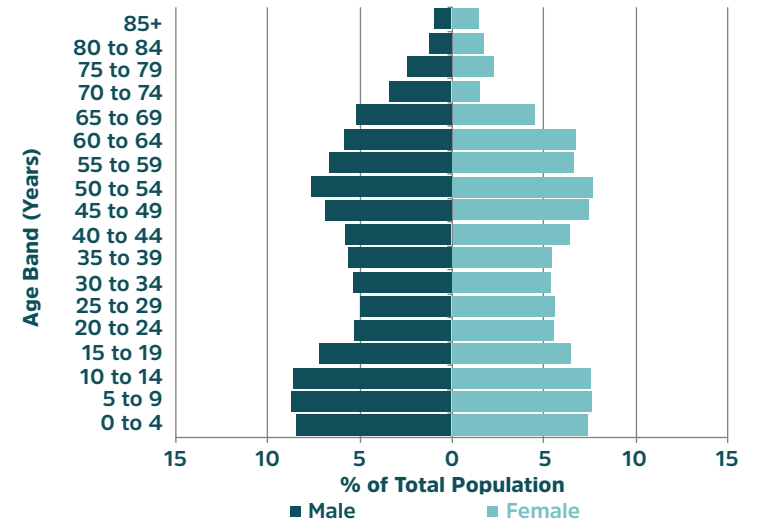
Pacific



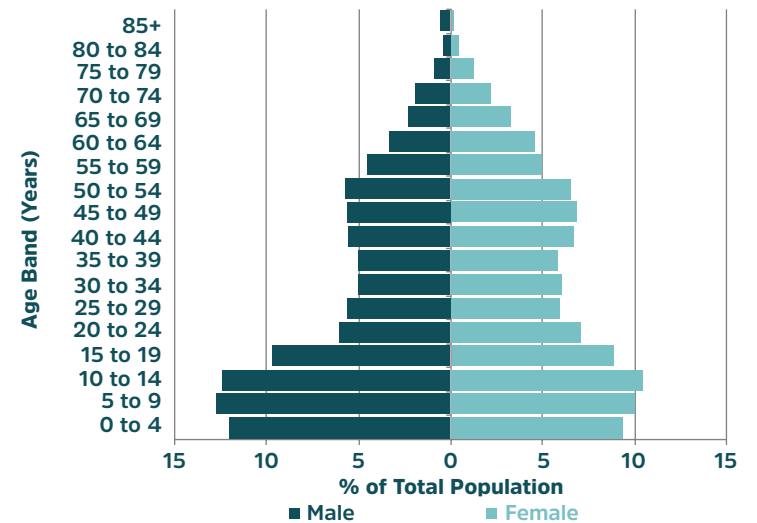
Asian

*Definition: People aged 15 years and over are defined as employed if they worked for one hour or more for pay or profit, or without pay in a family farm, business or professional practice, or if they had a job but were not at work for some reason.

Population Age Structure - Waitomo TA (2013 Census)



Population Age Structure - Waitomo TA Māori (2013 Census)



HOSPITALISATIONS AND DISEASE

1 IN 3

visit the emergency department each year



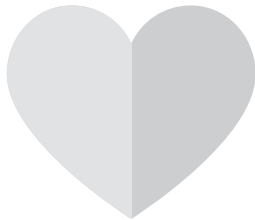
1 IN 4

is admitted to hospital each year



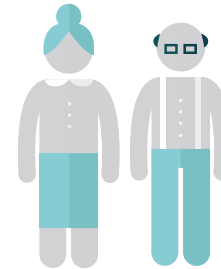
The most common
CHRONIC DISEASE

hospitalisations are chronic obstructive pulmonary disease (COPD), type 2 diabetes, heart failure, ischaemic heart disease (IHD) and stroke.



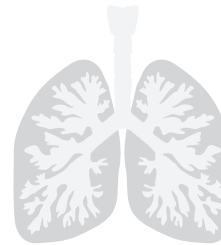
Most common chronic disease admissions

**65+
= COPD & TYPE 2
DIABETES**



Most common among

**MĀORI 65+
= COPD, HEART
FAILURE &
TYPE 2 DIABETES**



The Māori hospitalisation rate for

**COPD
aged 45+ is
5 TIMES**

higher than in non-Māori



MĀORI

aged 45-64 have

**4 TIMES HIGHER
RATES**

of type 2 diabetes hospitalisations than non-Māori



MĀORI

aged 45+ have

**3 TIMES
HIGHER**

rates for

HEART FAILURE

than non-Māori

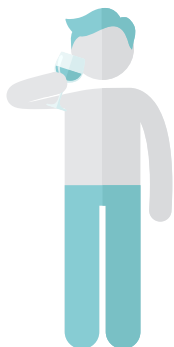


WAITOMO TA

KEY FINDINGS

1 IN 100
MĀORI
ADULTS

are admitted for conditions related to alcohol



3 OUT OF
1,000 WOMEN
45+ are hospitalised for
BREAST CANCER

each year

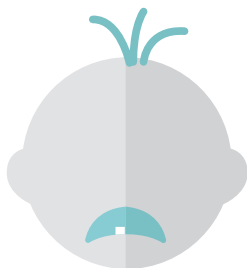


3 OUT OF 1,000
MĀORI ADULTS
are hospitalised for
SCHIZOPHRENIA

each year



2 IN 100
children have been
hospitalised for
DENTAL CARIES



DENTAL CARIES

hospitalisations are

60%

more common in

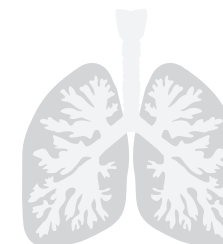
MĀORI CHILDREN

than non-Māori children



2 IN 100
CHILDREN ARE

hospitalised for respiratory infections each year



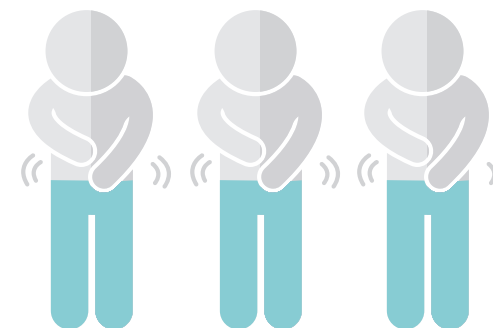
1 IN 2 PREGNANT WOMEN
ARE OVERWEIGHT OR
OBESE DURING PREGNANCY

(BMI over 25)



3 OUT OF 1,000
CHILDREN
are hospitalised for
GASTROENTERITIS

each year



WAITOMO TA IN 2026

PROJECTIONS | KEY FINDINGS

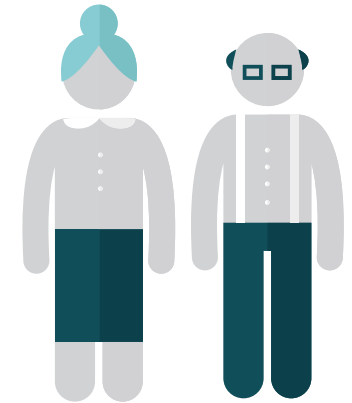
The population of
WAITOMO TA
will
DECREASE
BY 5%



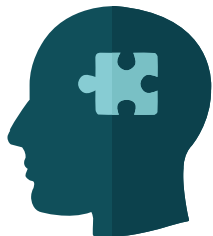
UNDER 15s
will
DECREASE
BY 9%



OVER 65s
will
INCREASE
BY 22%



The prevalence of
DEMENTIA IN 65+
is estimated to
INCREASE BY
50%



Admissions for
COPD IN 45+
are estimated to
INCREASE BY
15%



BREAST CANCER
admissions are estimated to
INCREASE BY
3%



Admissions for
**HEART FAILURE
STROKE & IHD**
admissions in 45+ are estimated to
INCREASE BY
10%



WAITOMO TA KEY HEALTH INDICATOR STATISTICS

Key health indicator statistics for Waitomo TA (total and Māori population) compared with the overall Waikato DHB, 2014.

Health indicators	Waikato DHB	Waitomo TA		Māori		Māori vs non-Māori
	Rate	Rate	Time trend since 2006	Rate	Time trend since 2006	Rate ratio
In-patient events per 1,000 population ¹	260.0	265.4	↑ Increase	280.8	↓ Decrease	1.10
Emergency department visits per 1,000 population ²	265.4	320.4*	-	397.7	-	1.47
Mortality rate per 1,000 population ³	7.2	8.6	-	9.0	-	-
Dementia, total with disease ⁴	4,348	107	-	17	-	0.4
<i>Hospital stays per 100, 000 population⁵</i>						
IHD						
45-64 years	566.0	441.7	≈ No change	449.7	≈ No Change	1.03
65+ years	1856.4	1481.5	≈ No change	2285.7	≈ No Change	1.68
COPD						
45-64 years	330.7	278.1	≈ No change	582.0	≈ No Change	4.10
65+ years	1473.7	2370.4	≈ No change	7619.0	≈ No Change	5.79
Diabetes type 2						
45-64 years	356.3	842.5*	≈ No change	1693.1	≈ No Change	3.67
65+ years	1019.2	1925.9	≈ No change	3238.1	≈ No Change	1.90
Heart failure						
45-64 years	150.4	409.0*	≈ No change	793.7	≈ No Change	3.35
65+ years	1129.2	1728.4	≈ No change	4476.2	≈ No Change	3.75
Stroke						
45-64 years	190.0	302.7	≈ No change	502.6	≈ No Change	2.36
65+ years	969.6	1234.6	≈ No change	2571.4	≈ No Change	2.61
Renal failure						
45-64 years	50.9	57.3	≈ No change	105.8	≈ No Change	2.98
65+ years	205.3	230.5	≈ No change	666.7	≈ No Change	4.63

Health indicators	Waikato DHB	Waitomo TA		Māori		Māori vs non-Māori
	Rate	Rate	Time trend since 2006	Rate	Time trend since 2006	Rate ratio
Breast cancer, women 45+ years	292.5	287.5	≈ No change	222.2	≈ No change	0.71
Mood disorder ⁶	157.5	63.3	≈ No change	94.1	≈ No change	2.66
Schizophrenia ⁶	130.2	123.6	≈ No change	263.5	≈ No change	11.67
Disorders due to psychoactive substance use ⁶	86.7	73.4	≈ No change	103.7	≈ No change	1.96
Intentional self-harm ⁷	149.4	77.8	≈ No change	77.7	≈ No change	0.86
Alcohol related harm and conditions ⁸	717.6	733.2	≈ No change	1211.0	≈ No change	-
Respiratory infections aged 0-14 years ⁹	2033.9	1947.6	≈ No change	2534.5	≈ No change	2.03
Asthma aged 0-14 years ¹⁰	431.3	311.6	≈ No change	379.3	≈ No change	1.65
Gastroenteritis aged 0-14 years ¹¹	535.5	292.7	≈ No change	258.6	≈ No change	0.77
Dental caries aged 0-14 years ¹²	1041.0	2443.8	≈ No change	2965.5	≈ No change	1.63
Rheumatic fever ¹³	5.6	15.7	≈ No change	28.6	≈ No change	-
<i>Community care service use per 1,000 population¹⁴</i>						
District nursing	286.4	434.3*	-	389.5	-	0.84
Public health nursing	19.2	39.8*	-	71.7	-	3.72
Physio-/occupational therapy/dietician	38.9	50.6*	-	47.5	-	0.90

Notes: 1-2 Waikato DHB hospital register Costpro, events per 1,000 population, 2014. 3 Events per 1,000 population, 2013. 4 Alzheimer's New Zealand. 5 Age- and ethnicity specific rates, annual average 2010-2014, Costpro. ICD10: ischemic heart disease (IHD) I20-25, chronic obstructive pulmonary disease (COPD) J40-44, J47, diabetes type 2 E11, heart failure I50, stroke I60-I69, renal failure N17-N19, breast cancer C50, 6 Age- and ethnicity-standardised rate per 100,000 population. Standardised to the NZ population. Mood disorder F30-F39, schizophrenia and delusional disorders F20-F29, disorders due to psychoactive substance use, F10-F19. 7 Age- and ethnicity-standardised rate per 100,000 population, ICD10 X60-X84. Standardised to the NZ population, 8 Alcohol attributable fraction weighted admissions, 9 Age- and ethnicity-specific rate per 100,000 population, ICD10 J00-J22, 10 Age- and ethnicity-specific rate per 100,000 population, ICD10 J45-46, 11 Age- and ethnicity-specific rate per 100,000 population, ICD10 A00-A09, 12 Age- and ethnicity-specific rate per 100,000 population, ICD10 K02, 13 Crude rate per 100,000 population, ICD10 I00-I02, 14 Events per 1,000 population, 2011-2014 (annual average), Costpro. Arrows show statistically significant differences over time ($p < 0.05$) - Data not available for comparison. Rate ratios: non-Māori is held as reference category. A ratio above/below 1 means the outcome is more/less common among Māori than non-Māori.

WAITOMO TA KEY HEALTH INDICATOR STATISTICS

Key socioeconomic indicator statistics for Waitomo TA (total and Māori population) compared with the overall Waikato DHB, 2013.

Indicators	Waikato DHB	Waitomo TA		Māori		Māori vs non-Māori
	Rate	Rate	Time trend since 2006	Rate	Time trend since 2006	Rate ratio
Risk behaviours¹						
Regular smokers (15+)	17.2%	24.7%*	↓ Decrease	41.4%	↓ Decrease	2.70
Male	17.8%	23.5%*	↓ Decrease	37.7%	≈ No change	2.26
Female	16.5%	25.7%*	↓ Decrease	44.3%	↓ Decrease	3.18
Regular smokers (15 to 24)	18.1%	27.4%*	↓ Decrease	37.1%	↓ Decrease	2.21
Male	19.0%	27.8%*	↓ Decrease	37.0%	≈ No change	2.00
Female	17.2%	27.2%*	↓ Decrease	37.8%	↓ Decrease	2.72
Smoking in pregnancy	18.7%	17.4%	-	29.9%	-	16.12
Births to mothers under age 19 per 1,000 births ²	66.4	107.4	-	164.2	-	4.43
Births to mothers over age 35 per 1,000 births ²	166.1	165.3	-	89.6	-	0.35
Overweight in pregnancy (BMI 25-29) ²⁻³	28.1%	22.3%	-	20.9%	-	0.87
Obese in pregnancy (BMI ≥30) ²⁻³	25.5%	27.3%	-	28.4%	-	1.09
Social and economic¹						
Rates of te reo in the home (among Māori)	25.7%	-	-	26.1%	≈ No change	-
Highest qualification: diploma (level 5) and over	25.2%	17.3%*	↑ Increase	9.5%	≈ No change	0.44
No qualification (15+)	25.0%	33.8%*	↓ Decrease	45.4%	↓ Decrease	1.64
Unemployed (percentage of population in labour force)	7.7%	6.0%*	↑ Increase	11.8%	≈ No change	3.83
Living in crowded housing	9.7%	13.2%*	-	-	-	-
Do not own usual residence	50.6%	53.4%*	↑ Increase	73.0%	↑ Increase	1.72
Rented households	37.3%	42.1%*	≈ No change	-	-	-
Households with no access to telecommunications	2.1%	3.9%*	↓ Decrease	-	-	-
Households with no access to a motor vehicle	7.1%	7.9%	≈ No change	-	-	-
Single parent households	19.0%	19.2%	≈ No change	-	-	-
Living in high deprivation areas ³	26.3%	47.9%	↑ Decrease	-	-	-

Notes: 1 2013 Census, 2 2014 National Maternity Collection, MoH, 3 Based on maternal height and weight at first registration with LMC or DHB Primary Maternity Service, 4NZDEP13 index scores of 9 or 10.
 *Significantly different from Waikato DHB value. Arrows show statistically significant differences over time (p<0.05) - Data not available for comparison. Rate ratios: non-Māori is held as reference category. A ratio above/below 1 means the outcome is more/less common among Māori than non-Māori.

WAITOMO TA PROJECTIONS 2026

Current and projected population and health statistics for Waitomo TA, 2016-2026

Indicator	Estimated <i>n</i> 2016	Estimated <i>n</i> 2026	Change <i>n</i>	2016-2026 %
Population estimates¹				
Total population	9,485	9,005	-480	-5.1%
Under 15	2,305	2,110	-195	-8.5%
Over 65	1,405	1,715	310	22.1%
Hospital admissions (<i>n</i>)				
IHD, 45+	29	31	2	8.1%
COPD, 45+	36	41	5	15.0%
Diabetes type 2, 45+	44	46	2	4.7%
Heart failure, 45+	31	34	3	10.1%
Stroke, 45+	22	25	2	9.8%
Mood disorder	6	5	0	-5.1%
Schizophrenia	10	10	-1	-5.1%
Gastroenteritis, 0-14	7	6	-1	-8.5%
Asthma, 0-14	52	48	-4	-8.5%
Breast cancer (women, 45+)	5	6	0	2.8%
Dementia ² , prevalence 65+	99	149	50	50.3%

Notes: Projections based on statistics NZ population projections by sex and age, 2016 (base)-2026, medium projection. Estimated admissions 2026 = current number of admissions (annual average 2010-2014) multiplied with the (age-specific) increase/decrease in population. ¹Population estimations for 2016. ²Number with dementia in 65+ (prevalence 8.1%) based on a 2012 Alzheimer's NZ report. ³2030, prevalence 8.7%.