



HEALTH PROFILE 2015

DID YOU KNOW?

13%

of the Waikato DHB population lives in Waipa TA

3RD

Largest Territorial Authority (TA) in Waikato DHB

46,668

people live in Waipa TA

BIRTHS IN 2014



32

births to women 19 years and under



107

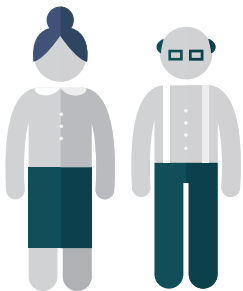
births to women 35 years and over



605

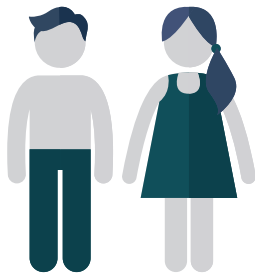
Total number of births in 2014

POPULATION (2013 Census)



16%

of the population is 65 years and over



21%

of the population is under 15 years old



7%

of the population is under 5 years of age

TRANSPORT

5%

of households have no access to a motor vehicle



SMOKING

20%

2006

Regular smokers 15 years and over

14%

2013

Regular smokers 15 years and over



Males live to around

80

years

Females live to around

84

years



15%

of households are single parent



6%

of the population live in crowded housing

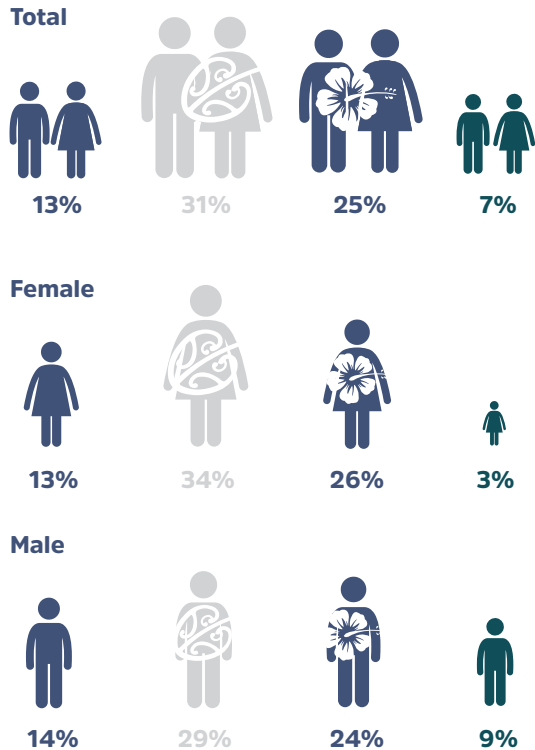


1%

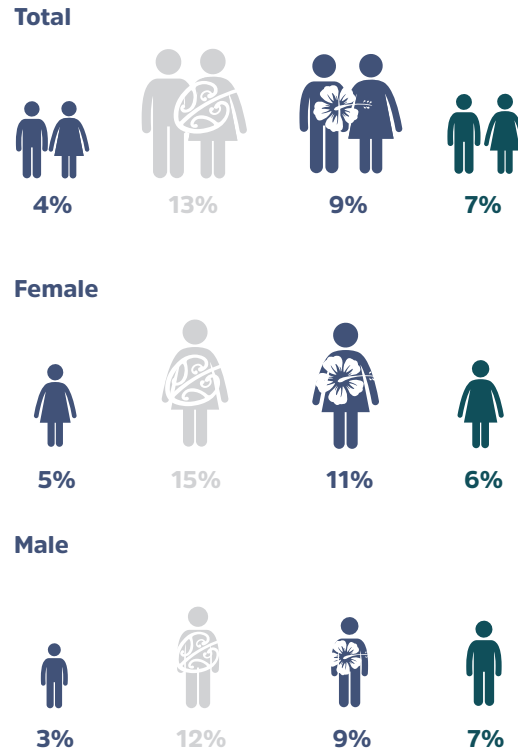
(0-14 years) of the population live in the most deprived areas (9 and 10 NZ Dep)



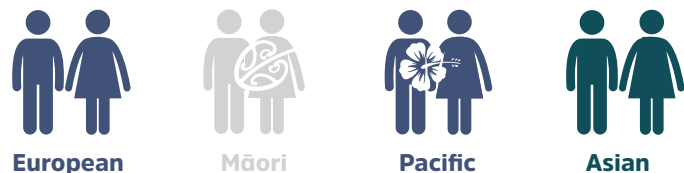
Percentage of regular smokers within Waipa TA by ethnicity. 2013 Census



Percentage of unemployed people within Waipa TA by ethnicity. 2013 Census

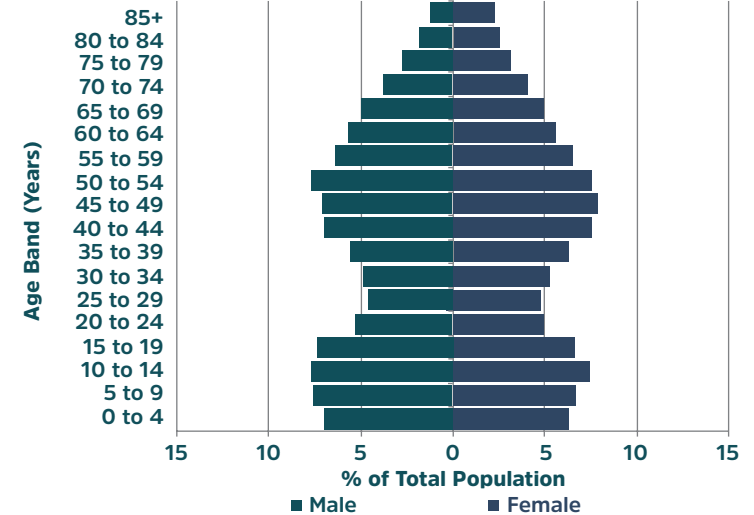


POPULATION KEY

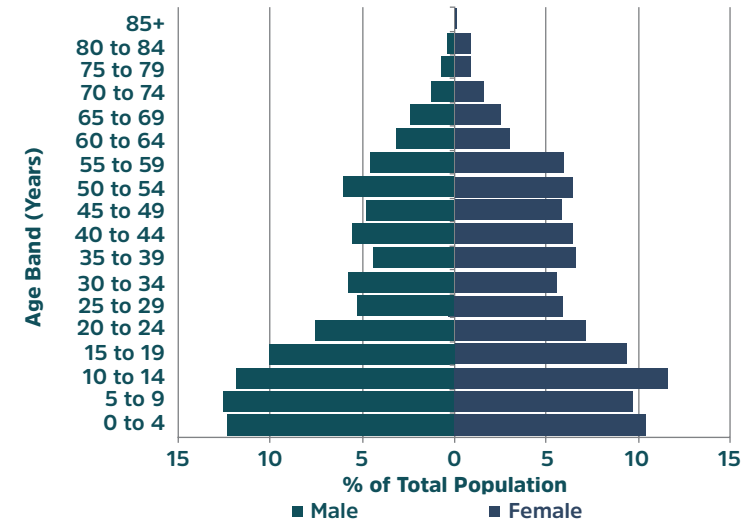


*Definition: People aged 15 years and over are defined as employed if they worked for one hour or more for pay or profit, or without pay in a family farm, business or professional practice, or if they had a job but were not at work for some reason.

Population Age Structure - Waipa TA (2013 Census)



Population Age Structure - Waipa TA Māori (2013 Census)



WAIPA TA KEY FINDINGS

HOSPITALISATIONS AND DISEASE

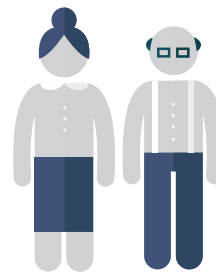
1 IN 5

visit the emergency department each year



Most common chronic disease admissions in

65+
= IHD & COPD



The

MĀORI
hospitalisation rate for
TYPE 2 DIABETES

aged 45+ is

6 TIMES HIGHER

than in non-Māori



1 IN 4

is admitted to hospital each year



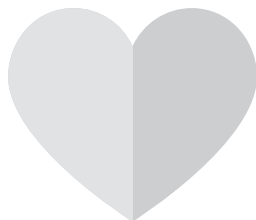
MĀORI 45-64
HAVE 5 TIMES
HIGHER RATES OF
HEART FAILURE

than non-Māori



The most common
CHRONIC DISEASE

hospitalisations are ischaemic heart disease (IHD), chronic obstructive pulmonary disease (COPD), stroke and heart failure



Admissions for

MOOD DISORDER
are seen in
1 IN 1,000
PEOPLE



Most common

MĀORI AGED 45+
have

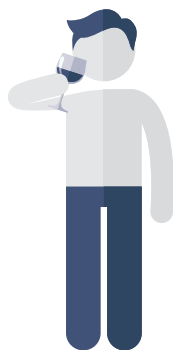
4 TIMES
HIGHER RATES
OF **STROKE**

than non-Māori



**1 IN 100
MĀORI
ADULTS**

are admitted for conditions related to alcohol



**4 OUT OF
1,000 WOMEN**
45+ are hospitalised for
BREAST CANCER

each year



**2 OUT OF 1,000
MĀORI ADULTS**
are hospitalised for
SCHIZOPHRENIA

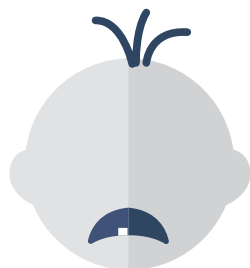
each year



**8 IN 1,000
CHILDREN**

have been hospitalised for

**DENTAL
CARIES**



DENTAL CARIES

hospitalisations are

**2 TIMES MORE
COMMON IN
MĀORI CHILDREN**

than non-Maori children

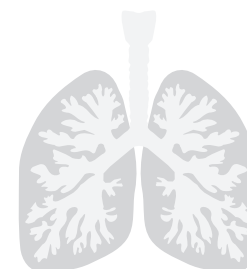


**2 IN 100 MĀORI
CHILDREN ARE**

hospitalised for

RESPIRATORY

infections each year



**1 IN 2 PREGNANT WOMEN
ARE OVERWEIGHT OR
OBESE DURING PREGNANCY**

(BMI over 25)

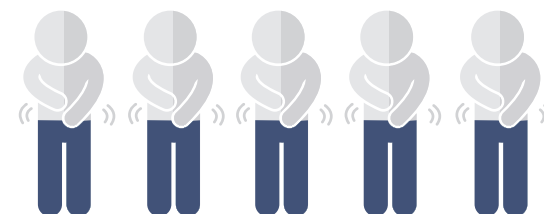


**5 OUT OF 1,000
CHILDREN**

are hospitalised for

GASTROENTERITIS

each year



WAIPA TA IN 2026

PROJECTIONS | KEY FINDINGS

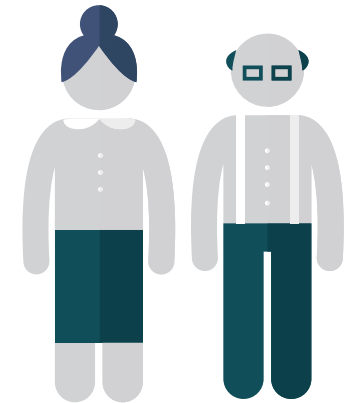
The population of
WAIPA
will
INCREASE
BY 5%



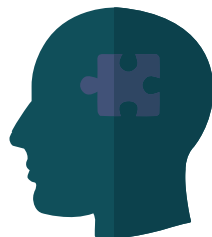
UNDER 15s
will
DECREASE
BY 2%



OVER 65s
will
INCREASE
BY 36%



The prevalence of
DEMENTIA IN 65+
is estimated to
INCREASE BY
67%



Admissions for
CHRONIC DISEASE
in 45+ is estimated to
INCREASE BY
20-30%



BREAST CANCER
ADMISSIONS IN 45+
are estimated to
INCREASE
BY 18%



Admissions for
MOOD DISORDER
and
SCHIZOPHRENIA
are estimated to
DECREASE
BY 5%



WAIPA TA KEY HEALTH INDICATOR STATISTICS

Key health indicator statistics for Waipa TA (total and Māori population) compared with the overall Waikato DHB, 2014.

Health indicators	Waikato DHB	Waipa TA		Māori		Māori vs non-Māori
	Rate	Rate	Time trend since 2006	Rate	Time trend since 2006	Rate ratio
In-patient events per 1,000 population ¹	260.0	249.7*	↑ Increase	220.5	↑ Increase	0.87
Emergency department visits per 1,000 population ²	265.4	191.0*	-	219.5	-	1.18
Mortality rate per 1,000 population ³	7.2	8.2	-	6.2	-	-
Dementia, total with disease ⁴	4,303	560	-	31	-	0.4
<i>Hospital stays per 100, 000 population⁵</i>						
IHD						
45-64 years	566.0	424.7	≈ No change	722.5	≈ No Change	1.84
65+ years	1856.4	1707.7	↓ Decrease	1217.9	≈ No Change	0.70
COPD						
45-64 years	330.7	195.9*	≈ No change	246.3	≈ No Change	1.29
65+ years	1473.7	1326.4	≈ No change	2692.3	≈ No Change	2.12
Diabetes type 2						
45-64 years	356.3	221.0	≈ No change	968.8	≈ No Change	6.82
65+ years	1019.2	810.2	≈ No change	3525.6	≈ No Change	5.07
Heart failure						
45-64 years	150.4	78.4	≈ No change	279.1	≈ No Change	4.88
65+ years	1129.2	910.8	≈ No change	2500.0	≈ No Change	2.96
Stroke						
45-64 years	190.0	153.6	≈ No change	476.2	≈ No Change	3.98
65+ years	969.6	992.9	≈ No change	1089.7	≈ No Change	1.10
Renal failure						
45-64 years	50.9	50.1	≈ No change	98.5	≈ No Change	2.19
65+ years	205.3	180.0	≈ No change	128.2	≈ No Change	0.70

Health indicators	Waikato DHB	Waipa TA		Māori		Māori vs non-Māori
	Rate	Rate	Time trend since 2006	Rate	Time trend since 2006	Rate ratio
Breast cancer, women 45+ years	292.5	387.2	≈ No change	525.7	≈ No change	1.40
Mood disorder ⁶	157.5	146.8	≈ No change	109.1	≈ No change	0.92
Schizophrenia ⁶	130.2	67.2	≈ No change	175.6	≈ No change	4.48
Disorders due to psychoactive substance use ⁶	86.7	61.5	≈ No change	103.6	≈ No change	1.92
Intentional self-harm ⁷	149.4	148.0	≈ No change	213.4	≈ No change	1.51
Alcohol related harm and conditions ⁸	717.6	656.5	≈ No change	1180.1	≈ No change	-
Respiratory infections aged 0-14 years ⁹	2033.9	1413.7*	≈ No change	1997.1	≈ No change	1.59
Asthma aged 0-14 years ¹⁰	431.3	310.2	≈ No change	389.9	≈ No change	1.35
Gastroenteritis aged 0-14 years ¹¹	535.5	475.3	≈ No change	389.9	≈ No change	0.78
Dental caries aged 0-14 years ¹²	1041.0	775.1	≈ No change	1245.8	≈ No change	1.92
Rheumatic fever ¹³	5.1	1.7	-	13.1	-	-
<i>Community care service use per 1,000 population¹⁴</i>						
District nursing	286.4	257.5	-	180.9	-	0.67
Public health nursing	19.2	9.1	-	23.4	-	3.35
Physio-/occupational therapy/dietician	38.9	31.8	-	25.8	-	0.79

Notes: 1-2 Waikato DHB hospital register Costpro, events per 1,000 population, 2014. 3 Events per 1,000 population, 2013. 4 Alzheimer's New Zealand. 5 Age- and ethnicity specific rates, annual average 2010-2014, Costpro. ICD10: ischemic heart disease (IHD) I20-25, chronic obstructive pulmonary disease (COPD) J40-44, J47, diabetes type 2 E11, heart failure I50, stroke I60-I69, renal failure N17-N19, breast cancer C50, 6 Age- and ethnicity-standardised rate per 100,000 population. Standardised to the NZ population. Mood disorder F30-F39, schizophrenia and delusional disorders F20-F29, disorders due to psychoactive substance use, F10-F19. 7 Age- and ethnicity-standardised rate per 100,000 population, ICD10 X60-X84. Standardised to the NZ population, 8 Alcohol attributable fraction weighted admissions, 9 Age- and ethnicity-specific rate per 100,000 population, ICD10 J00-J22, 10 Age- and ethnicity-specific rate per 100,000 population, ICD10 J45-46, 11 Age- and ethnicity-specific rate per 100,000 population, ICD10 A00-A09, 12 Age- and ethnicity-specific rate per 100,000 population, ICD10 K02, 13 Crude rate per 100,000 population, ICD10 I00-I02, 14 Events per 1,000 population, 2011-2014 (annual average), Costpro. Arrows show statistically significant differences over time ($p < 0.05$) - Data not available for comparison. Rate ratios: non-Māori is held as reference category. A ratio above/below 1 means the outcome is more/less common among Māori than non-Māori.

WAIPA TA KEY HEALTH INDICATOR STATISTICS

Key socioeconomic indicator statistics for Waipa TA (total and Māori population) compared with the overall Waikato DHB, 2013.

Indicators	Waikato DHB	Waipa TA		Māori		Māori vs non-Māori
	Rate	Rate	Time trend since 2006	Rate	Time trend since 2006	Rate ratio
Risk behaviours¹						
Regular smokers (15+)	17.2%	14.5%*	↓ Decrease	31.5%	↓ Decrease	2.55
Male	17.8%	15.1%*	↓ Decrease	29.0%	↓ Decrease	2.17
Female	16.5%	14.0%*	↓ Decrease	33.7%	↓ Decrease	2.96
Regular smokers (15 to 24)	18.1%	15.9%*	↓ Decrease	29.8%	↓ Decrease	2.36
Male	19.0%	17.1%	↓ Decrease	28.5%	↓ Decrease	1.97
Female	17.2%	14.8%*	↓ Decrease	31.1%	↓ Decrease	2.86
Smoking in pregnancy	18.7%	10.4%*	-	24.1%	-	3.86
Births to mothers under age 19 per 1,000 births ²	66.4	52.9	-	113.5	-	3.29
Births to mothers over age 35 per 1,000 births ²	166.1	176.9	-	85.1	-	0.42
Overweight in pregnancy (BMI 25-29) ²⁻³	28.1%	29.1%	-	27.7%	-	0.94
Obese in pregnancy (BMI ≥30) ²⁻³	25.5%	21.3%	-	29.1%	-	1.53
Social and economic¹						
Rates of te reo in the home (among Māori)	25.7%	-	-	21.0%	↓ Decrease	-
Highest qualification: diploma (level 5) and over	25.2%	25.7%	↑ Increase	16.6%	↑ Increase	0.62
No qualification (15+)	25.0%	23.2%*	↓ Decrease	34.5%	↓ Decrease	1.58
Unemployed (percentage of population in labour force)	7.7%	4.9%*	↑ Increase	13.4%	↑ Increase	3.48
Living in crowded housing	9.7%	5.6%	-	-	-	-
Do not own usual residence	50.6%	43.3%*	↑ Increase	69.7%	↑ Increase	1.75
Rented households	37.3%	30.5%*	↑ Increase	-	-	-
Households with no access to telecommunications	2.1%	1.4%*	≈ No change	-	-	-
Households with no access to a motor vehicle	7.1%	4.7%*	≈ No change	-	-	-
Single parent households	19.0%	15.2%*	≈ No change	-	-	-
Living in high deprivation areas ³	26.3%	1.0%*	≈ No change	-	-	-

Notes: 1 2013 Census, 2 2014 National Maternity Collection, MoH, 3 Based on maternal height and weight at first registration with LMC or DHB Primary Maternity Service, 4NZDEP13 index scores of 9 or 10.
 *Significantly different from Waikato DHB value. Arrows show statistically significant differences over time (p<0.05) - Data not available for comparison. Rate ratios: non-Māori is held as reference category. A ratio above/below 1 means the outcome is more/less common among Māori than non-Māori.

WAIPA TA PROJECTIONS 2026

Current and projected population and health statistics for Waipa TA, 2016-2026

Indicator	Estimated <i>n</i> 2016	Estimated <i>n</i> 2026	Change <i>n</i>	2016-2026 %
Population estimates¹				
Total population	46,990	49,195	2,205	4.7%
Under 15	10,095	9,915	-180	-1.8%
Over 65	8,715	11,860	3,145	36.1%
<i>Hospital admissions (n)</i>				
IHD, 45+	183	226	43	23.6%
COPD, 45+	125	160	35	27.7%
Diabetes type 2, 45+	89	110	20	22.8%
Heart failure, 45+	79	103	24	30.7%
Stroke, 45+	95	120	26	27.4%
Mood disorder	69	72	3	4.7%
Schizophrenia	29	31	1	4.7%
Gastroenteritis, 0-14	47	46	-1	-1.8%
Asthma, 0-14	77	76	-1	-1.8%
Breast cancer (women, 45+)	42	49	7	17.5%
Dementia², prevalence 65+	614	1,027	413	67.2%

Notes: Projections based on statistics NZ population projections by sex and age, 2016 (base)-2026, medium projection. Estimated admissions 2026 = current number of admissions (annual average 2010-2014) multiplied with the (age-specific) increase/decrease in population. ¹Population estimations for 2016. ²Number with dementia in 65+ (prevalence 8.1%) based on a 2012 Alzheimer's NZ report. ³2030, prevalence 8.7%.