

THAMES-COROMANDEL

HEALTH PROFILE 2015

Population Health

Waikato District Health Board



DID YOU KNOW?

7%

of the Waikato DHB population lives in Thames-Coromandel TA

5TH

Largest Territorial Authority (TA) in Waikato DHB

26,181

people live in Thames-Coromandel TA

BIRTHS IN 2014



16

births to women 19 years and under



49

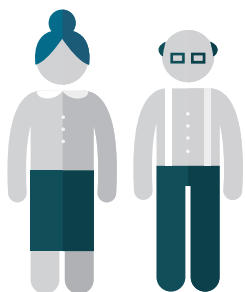
births to women 35 years and over



232

Total number of births in 2014

POPULATION (2013 Census)



27%

of the population is 65 years and over



16%

of the population is under 15 years old



5%

of the population is under 5 years of age

TRANSPORT

7%

of households have no access to a motor vehicle



Males live to around **80** years

Females live to around **84** years

15%

of households are single parent



6%

of the population live in crowded housing

14%

(0-14 years) of the population live in the most deprived areas (9 and 10 NZ Dep)

SMOKING

22%
2006

Regular smokers 15 years and over

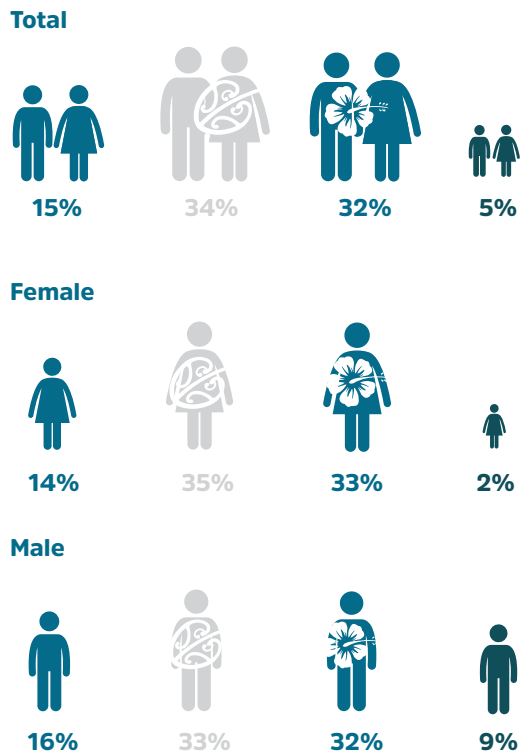
16%
2013

Regular smokers 15 years and over

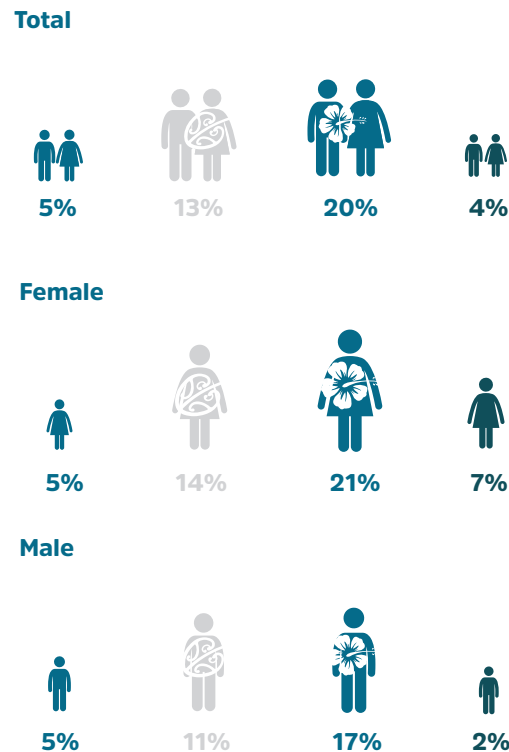


THAMES-COROMANDEL HEALTH PROFILE 2015

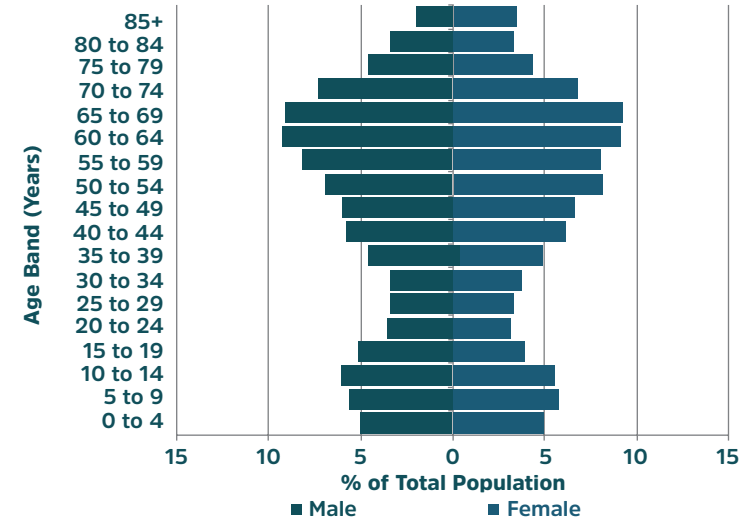
Percentage of regular smokers within Thames-Coromandel TA by ethnicity. 2013 Census



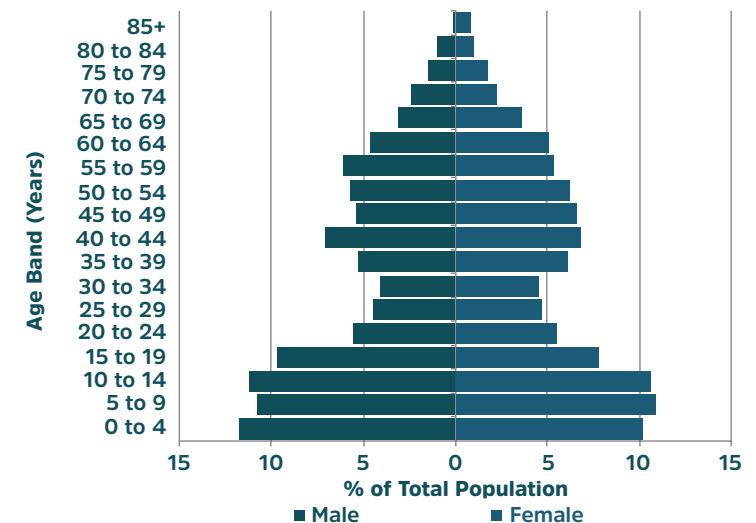
Percentage of unemployed people within Thames-Coromandel TA by ethnicity. 2013 Census



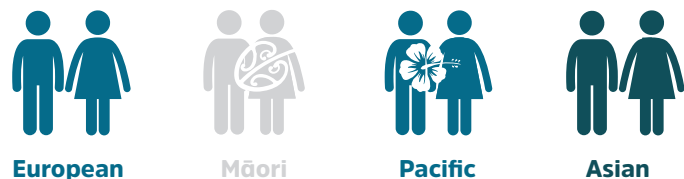
Population Age Structure - Thames-Coromandel TA (2013 Census)



Population Age Structure - Thames-Coromandel TA Māori (2013 Census)



POPULATION KEY



*Definition: People aged 15 years and over are defined as unemployed if they worked for one hour or more for pay or profit, or without pay in a family farm, business or professional practice, or if they had a job but were not at work for some reason.

THAMES-COROMANDEL KEY FINDINGS

HOSPITALISATIONS AND DISEASE

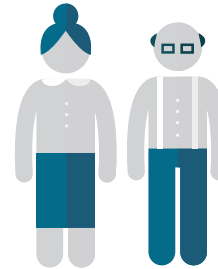
1 IN 3

visit the emergency department each year



Most common chronic disease admissions

**65+
= IHD & COPD**



The

MĀORI

hospitalisation rate for

TYPE 2 DIABETES & STROKE

aged 45-64 are

3 TIMES HIGHER

than in non-Māori



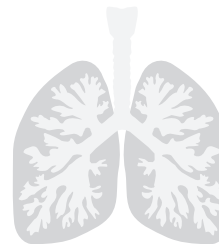
1 IN 3

is admitted to hospital each year



Most common among

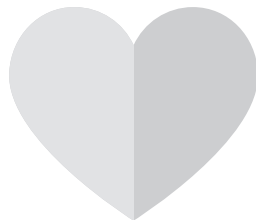
**MĀORI 65+
= COPD, IHD &
HEART FAILURE**



The most common

CHRONIC DISEASE

hospitalisations are ischaemic heart disease (IHD), chronic obstructive pulmonary disease (COPD), heart failure and stroke.



Admissions for

MOOD DISORDER

are seen in

**1 OUT OF
1,000 PEOPLE**



MĀORI

aged 45-64 have

5 TIMES HIGHER

rates of

COPD

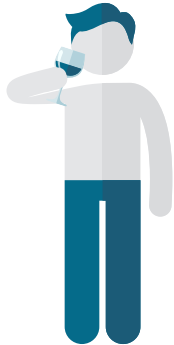
than non-Māori



THAMES-COROMANDEL

KEY FINDINGS

9 IN 1,000 ADULTS
are admitted for conditions related to
ALCOHOL



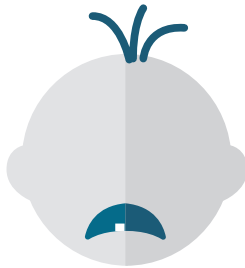
3 OUT OF 1,000 WOMEN
45+ are hospitalised for
BREAST CANCER
each year



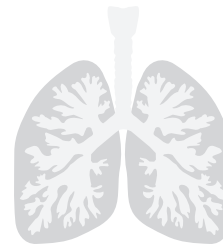
3 OUT OF 1,000 MĀORI ADULTS
are hospitalised for
SCHIZOPHRENIA
each year



1 IN 100 CHILDREN
have been hospitalised for
DENTAL CARIES



1 IN 100 CHILDREN ARE
hospitalised for
RESPIRATORY
infections each year



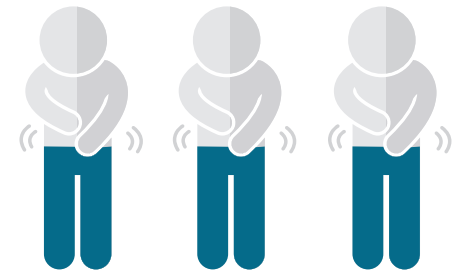
ASTHMA
hospitalisations are
2 TIMES MORE
common in
MĀORI CHILDREN
than non-Māori children



1 IN 2 PREGNANT WOMEN
ARE OVERWEIGHT OR
OBESE DURING PREGNANCY
(BMI over 25)



3 OUT OF 1,000 CHILDREN
are hospitalised for
GASTROENTERITIS
each year



THAMES-COROMANDEL IN 2026

PROJECTIONS | KEY FINDINGS

Population
Health

Waikato District Health Board

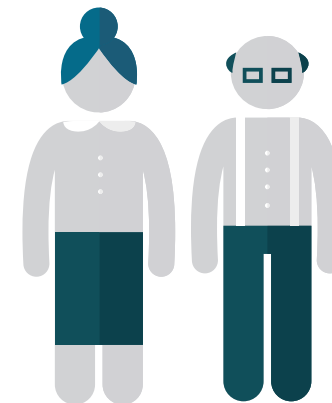
The population of
**THAMES-
COROMANDEL TA**
will
**DECREASE
BY 1%**



UNDER 15s
will
**DECREASE
BY 9%**



OVER 65s
will
**INCREASE
BY 22%**



The prevalence of
DEMENTIA IN 65+
is estimated to
**INCREASE BY
33%**



Admissions for
HEART FAILURE
in 45+ are estimated to
**INCREASE BY
20%**



**COPD & TYPE 2
DIABETES**
admissions in 45+ are
estimated to
**INCREASE
BY 15%**



Admissions for
BREAST CANCER
are estimated to
**INCREASE
BY 6%**



THAMES-COROMANDEL TA KEY HEALTH INDICATOR STATISTICS

Key health indicator statistics for Thames-Coromandel TA (total and Māori population) compared with the overall Waikato DHB, 2014.

Health indicators	Waikato DHB	Thames-Coromandel TA		Māori		Māori vs non-Māori
	Rate	Rate	Time trend since 2006	Rate	Time trend since 2006	Rate ratio
In-patient events per 1,000 population ¹	260.0	312.4*	↑ Increase	213.8	↑ Increase	0.65
Emergency department visits per 1,000 population ²	265.4	343.9*	-	316.3	-	0.91
Mortality rate per 1,000 population ³	7.2	10.0*	-	3.9	-	-
Dementia, total with disease ⁴	4,303	314	-	21	-	0.4
<i>Hospital stays per 100, 000 population⁵</i>						
IHD						
45-64 years	566.0	898.6*	≈ No change	1010.8	≈ No Change	1.14
65+ years	1856.4	2143.8	≈ No change	1988.3	≈ No Change	0.92
COPD						
45-64 years	330.7	280.6	≈ No change	903.2	≈ No Change	4.51
65+ years	1473.7	1344.1	≈ No change	2807.0	≈ No Change	2.20
Diabetes type 2						
45-64 years	356.3	172.3*	≈ No change	451.6	≈ No Change	3.32
65+ years	1019.2	706.1*	≈ No change	1578.9	≈ No Change	2.38
Heart failure						
45-64 years	150.4	86.2	≈ No change	215.1	≈ No Change	2.58
65+ years	1129.2	907.4	≈ No change	1812.9	≈ No Change	2.09
Stroke						
45-64 years	190.0	162.5	≈ No change	408.6	≈ No Change	3.13
65+ years	969.6	879.1	≈ No change	643.3	≈ No Change	0.72
Renal failure						
45-64 years	50.9	61.5	≈ No change	86.0	≈ No Change	1.47
65+ years	205.3	195.7	≈ No change	117.0	≈ No Change	0.58

Health indicators	Waikato DHB	Thames-Coromandel TA		Māori		Māori vs non-Māori
	Rate	Rate	Time trend since 2006	Rate	Time trend since 2006	Rate ratio
Breast cancer, women 45+ years	292.5	357.6	≈ No change	587.4	≈ No change	1.75
Mood disorder ⁶	157.5	125.9	≈ No change	80.8	≈ No change	0.70
Schizophrenia ⁶	130.2	127.6	≈ No change	299.0	≈ No change	3.91
Disorders due to psychoactive substance use ⁶	86.7	110.7	≈ No change	104.9	≈ No change	0.95
Intentional self-harm ⁷	149.4	238.8	≈ No change	158.7	≈ No change	0.56
Alcohol related harm and conditions ⁸	717.6	882.2	≈ No change	-	-	-
Respiratory infections aged 0-14 years ⁹	2033.9	876.1*	≈ No change	1213.0	≈ No change	1.68
Asthma aged 0-14 years ¹⁰	431.3	313.7	≈ No change	458.6	≈ No change	1.86
Gastroenteritis aged 0-14 years ¹¹	535.5	327.7	≈ No change	295.9	≈ No change	0.86
Dental caries aged 0-14 years ¹²	1041.0	1166.5	≈ No change	1109.5	≈ No change	0.93
Rheumatic fever ¹³	5.1	2.3	-	4.8	-	2.64
<i>Community care service use per 1,000 population¹⁴</i>						
District nursing	286.4	513.3*	-	303.0	-	0.55
Public health nursing	19.2	37.7*	-	61.8	-	1.86
Physio-/occupational therapy/dietician	38.9	68.6*	-	37.2	-	0.50

Notes: 1-2 Waikato DHB hospital register Costpro, events per 1,000 population, 2014. 3 Events per 1,000 population, 2013. 4 Alzheimer's New Zealand. 5 Age- and ethnicity specific rates, annual average 2010-2014, Costpro. ICD10: ischemic heart disease (IHD) I20-25, chronic obstructive pulmonary disease (COPD) J40-44, J47, diabetes type 2 E11, heart failure I50, stroke I60-I69, renal failure N17-N19, breast cancer C50, 6 Age- and ethnicity-standardised rate per 100,000 population. Standardised to the NZ population. Mood disorder F30-F39, schizophrenia and delusional disorders F20-F29, disorders due to psychoactive substance use, F10-F19. 7 Age- and ethnicity-standardised rate per 100,000 population, ICD10 X60-X84. Standardised to the NZ population, 8 Alcohol attributable fraction weighted admissions, 9 Age- and ethnicity-specific rate per 100,000 population, ICD10 J00-J22, 10 Age- and ethnicity-specific rate per 100,000 population, ICD10 J45-46, 11 Age- and ethnicity-specific rate per 100,000 population, ICD10 A00-A09, 12 Age- and ethnicity-specific rate per 100,000 population, ICD10 K02, 13 Crude rate per 100,000 population, ICD10 I00-I02, 14 Events per 1,000 population, 2011-2014 (annual average), Costpro. Arrows show statistically significant differences over time ($p < 0.05$) - Data not available for comparison. Rate ratios: non-Māori is held as reference category. A ratio above/below 1 means the outcome is more/less common among Māori than non-Māori.

THAMES-COROMANDEL TA KEY HEALTH INDICATOR STATISTICS

Key socioeconomic indicator statistics for Thames-Coromandel TA (total and Māori population) compared with the overall Waikato DHB, 2013.

Indicators	Waikato DHB	Thames-Coromandel TA		Māori		Māori vs non-Māori
	Rate	Rate	Time trend since 2006	Rate	Time trend since 2006	Rate ratio
Risk behaviours¹						
Regular smokers (15+)	17.2%	16.3%*	↓ Decrease	33.8%	↓ Decrease	2.48
Male	17.8%	16.9%	↓ Decrease	32.9%	≈ No change	2.26
Female	16.5%	15.6%	↓ Decrease	34.7%	↓ Decrease	2.72
Regular smokers (15 to 24)	18.1%	20.1%	↓ Decrease	31.5%	↓ Decrease	2.06
Male	19.0%	22.5%*	↓ Decrease	36.5%	≈ No change	2.17
Female	17.2%	17.4%	↓ Decrease	26.4%	↓ Decrease	1.98
Smoking in pregnancy	18.7%	17.7%	-	36.1%	-	3.85
Births to mothers under age 19 per 1,000 births ²	66.4	69.0	-	194.4	-	15.56
Births to mothers over age 35 per 1,000 births ²	166.1	211.2	-	138.9	-	0.57
Overweight in pregnancy (BMI 25-29) ²⁻³	28.1%	29.7%	-	34.7%	-	1.26
Obese in pregnancy (BMI ≥30) ²⁻³	25.5%	22.4%	-	26.4%	-	1.28
Social and economic¹						
Rates of te reo in the home (among Māori)	25.7%	-	-	22.3%	↓ Decrease	-
Highest qualification: diploma (level 5) and over	25.2%	21.4%*	↑ Increase	12.0%	≈ No change	0.53
No qualification (15+)	25.0%	27.7%*	↓ Decrease	38.3%	≈ No change	1.47
Unemployed (percentage of population in labour force)	7.7%	5.8%*	↑ Increase	12.6%	↑ Increase	2.71
Living in crowded housing	9.7%	5.6%	-	-	-	-
Do not own usual residence	50.6%	39.3%*	↑ Increase	66.3%	≈ No change	1.88
Rented households	37.3%	31.3%*	≈ No change	-	-	-
Households with no access to telecommunications	2.1%	2.7%*	≈ No change	-	-	-
Households with no access to a motor vehicle	7.1%	7.3%	≈ No change	-	-	-
Single parent households	19.0%	14.6%	≈ No change	-	-	-
Living in high deprivation areas ³	26.3%	15.0%*	≈ No change	-	-	-

Notes: 1 2013 Census, 2 2014 National Maternity Collection, MoH, 3 Based on maternal height and weight at first registration with LMC or DHB Primary Maternity Service, 4NZDEP13 index scores of 9 or 10.
 *Significantly different from Waikato DHB value. Arrows show statistically significant differences over time (p<0.05) - Data not available for comparison. Rate ratios: non-Māori is held as reference category. A ratio above/below 1 means the outcome is more/less common among Māori than non-Māori.

THAMES-COROMANDEL TA PROJECTIONS 2026

Current and projected population and health statistics for Thames-Coromandel TA, 2016-2026

Indicator	Estimated <i>n</i> 2016	Estimated <i>n</i> 2026	Change <i>n</i>	2016-2026 %
Population estimates¹				
Total population	26,410	26,180	-230	-0.9%
Under 15	4,190	3,815	-375	-8.9%
Over 65	7,200	8,780	1,580	21.9%
Hospital admissions (<i>n</i>)				
IHD, 45+	224	250	26	11.6%
COPD, 45+	118	136	19	15.8%
Diabetes type 2, 45+	64	73	10	15.0%
Heart failure, 45+	69	83	14	19.7%
Stroke, 45+	75	88	12	16.4%
Mood disorder	30	30	0	-0.9%
Schizophrenia	26	26	0	-0.9%
Gastroenteritis, 0-14	14	13	-1	-8.9%
Asthma, 0-14	50	45	-4	-8.9%
Breast cancer (women, 45+)	28	30	2	6.4%
Dementia ² , prevalence 65+	573	760	187	32.6%

Notes: Projections based on statistics NZ population projections by sex and age, 2016 (base)-2026, medium projection. Estimated admissions 2026 = current number of admissions (annual average 2010-2014) multiplied with the (age-specific) increase/decrease in population. ¹Population estimations for 2016. ²Number with dementia in 65+ (prevalence 8.1%) based on a 2012 Alzheimer's NZ report. ³2030, prevalence 8.7%.